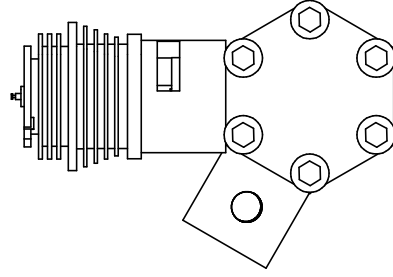
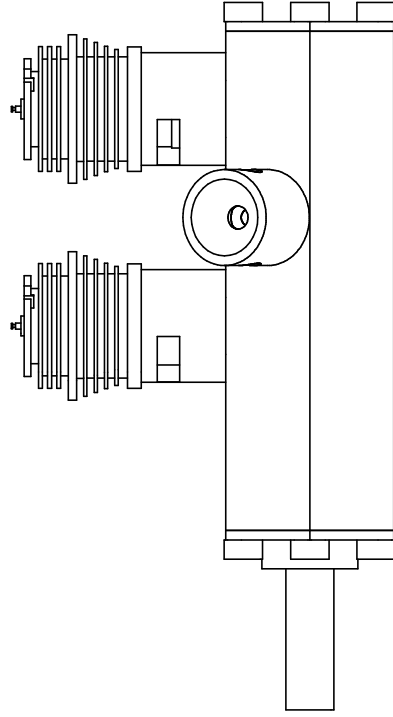
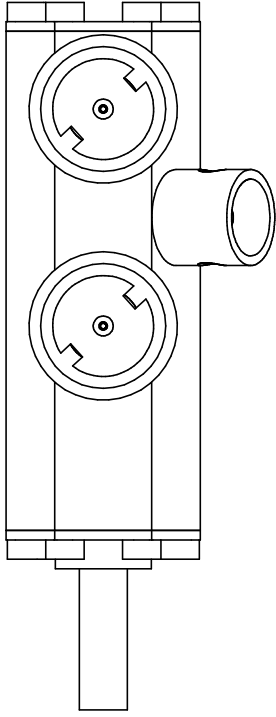
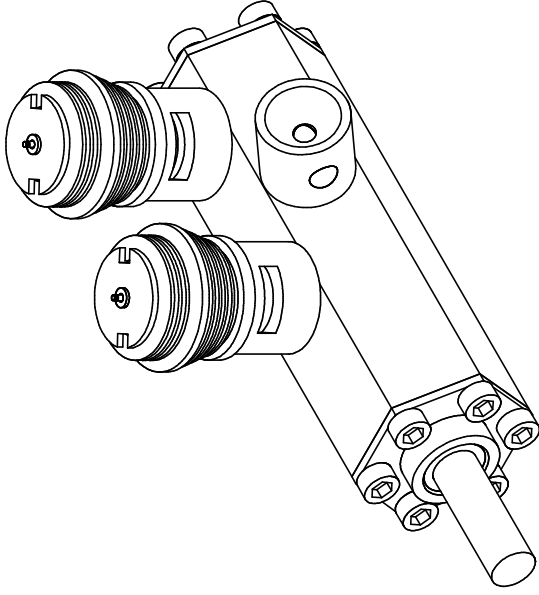


# James Engine HEX-2

ZONE

REV

15 Jul 06



SIZE  
**A**

Title  
HEX-2

REV

SCALE  
1:1

SHEET

SHEET 1 of 6

# James Engine HEX-2

ZONE

REV

15 Jul 06

Item Number	Quantity	Part Number	Part Name	Revision	Comment
1	2		Crankshaft Pin		3/32" by 5/8" Dowel Pin
2	1		Crankshaft		5/8" TGP
3	12		Hex Bolt		4/40 x 3/8"
4	1		Front Plate		7/8" Aluminum HEX Rod
5	1		Back Plate		7/8" Aluminum HEX Rod
6	2		Cylinder		COX(tm) .049
7	1		Crankshaft Holding Tool		7/8" Aluminum HEX Rod
8	1		Venturi		1/2" Aluminum Round
9	2		Piston/Connecting Rod		COX(tm) .049
10	1		Crankshaft End		5/8" TGP
11	1		Crank Case		7/8" Aluminum HEX Rod
12	2		Glow Head		COX(tm) .049
13	1		Needle Valve		OS(tm) .010 std

SIZE

**A**

Title

BILL OF MATERIALS

REV

SCALE

1:1

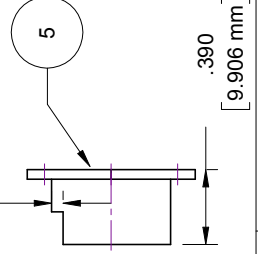
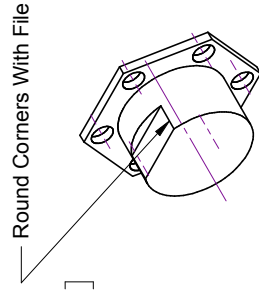
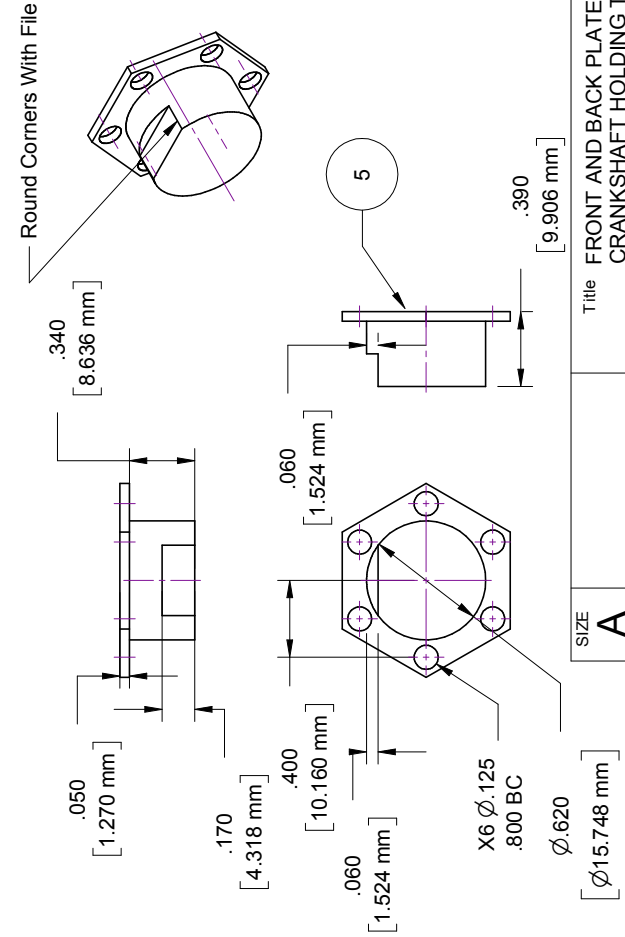
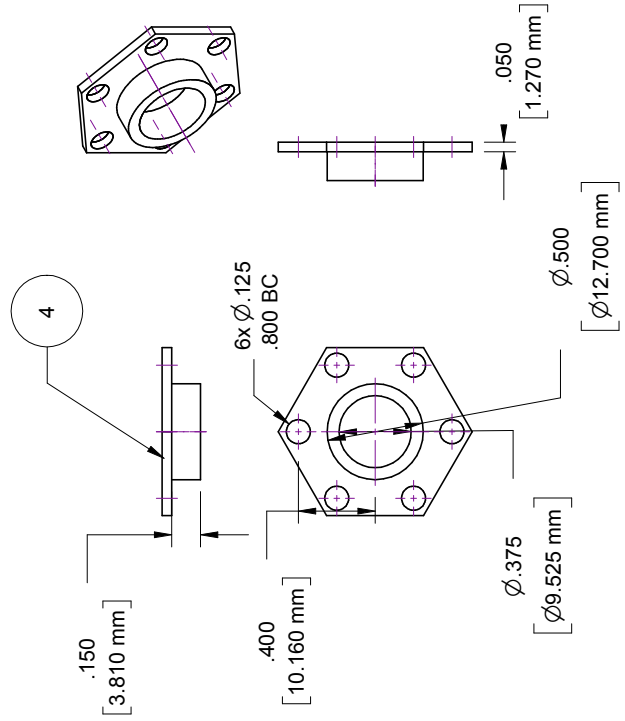
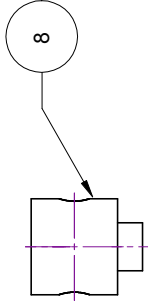
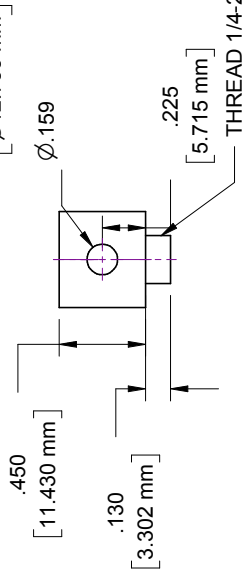
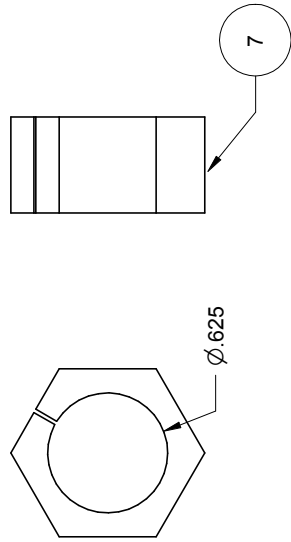
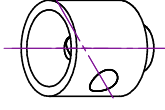
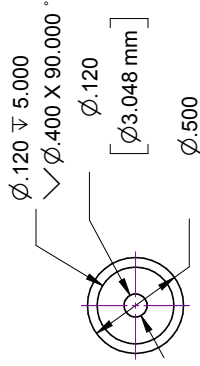
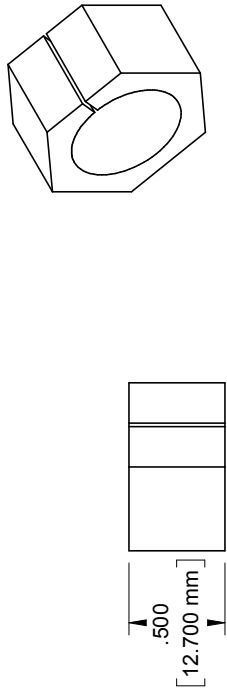
SHEET

SHEET 2 of 6

# James Engine HEX-2

ZONE REV

15 Jul 06



SIZE  
**A**

SCALE  
1:1

Title  
FRONT AND BACK PLATE, VENTURI,  
CRANKSHAFT HOLDING TOOL

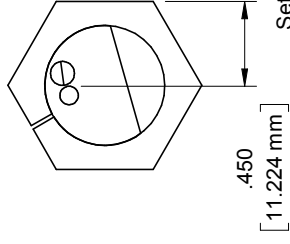
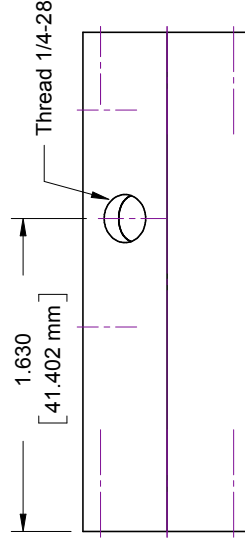
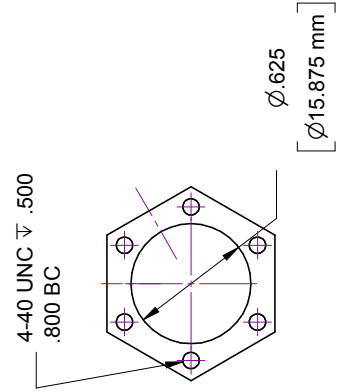
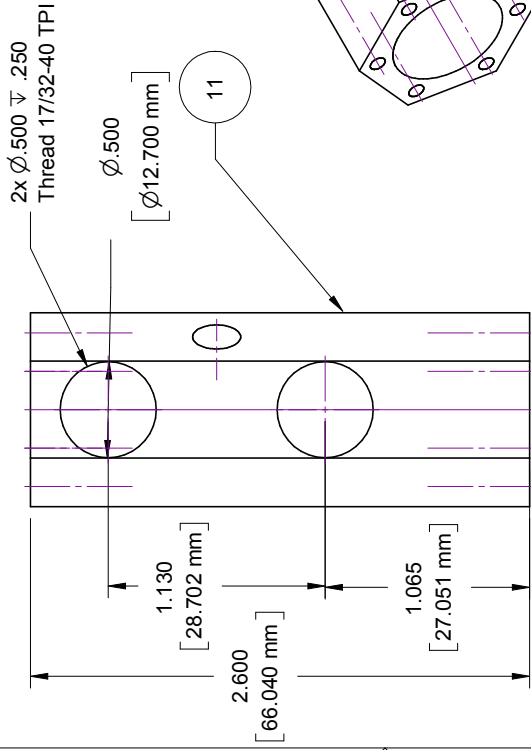
SHEET  
3 of 6

# James Engine HEX-2

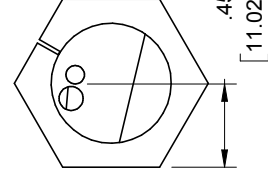
ZONE

REV

15 Juli 06



Setup for milling slot for face 1 (cylinder 1).



Setup for milling slot for face 2 (cylinder 2).

SIZE

A

Title

CRANKCASE

REV

SCALE

1:1

SHEET

SHEET 4 of 6

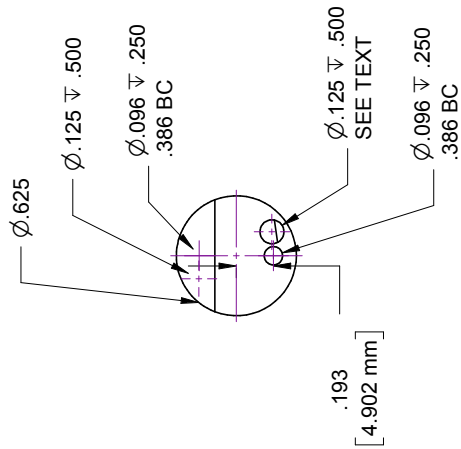
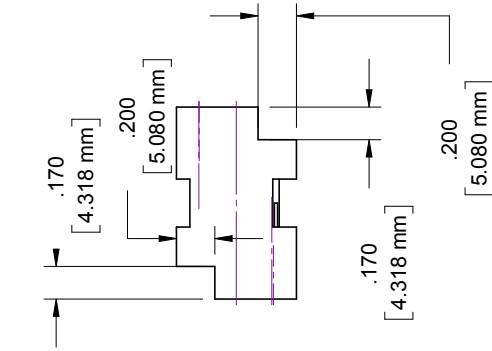
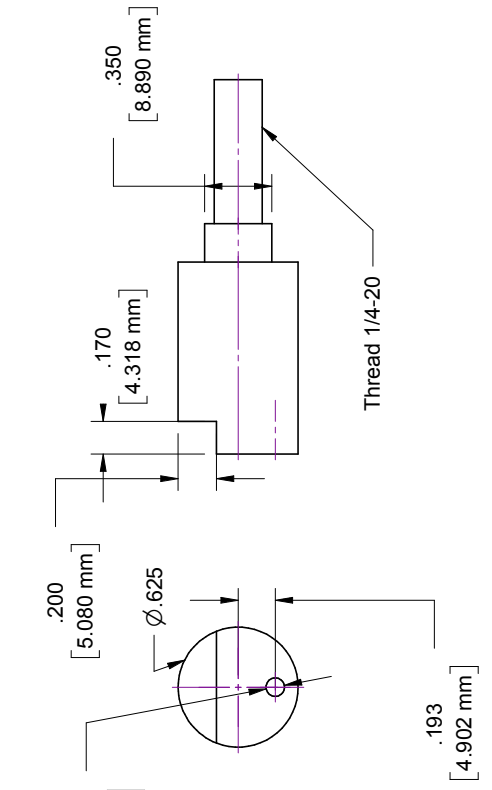
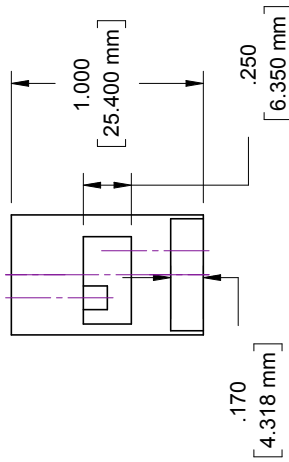
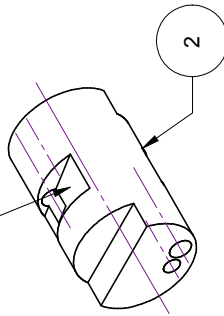
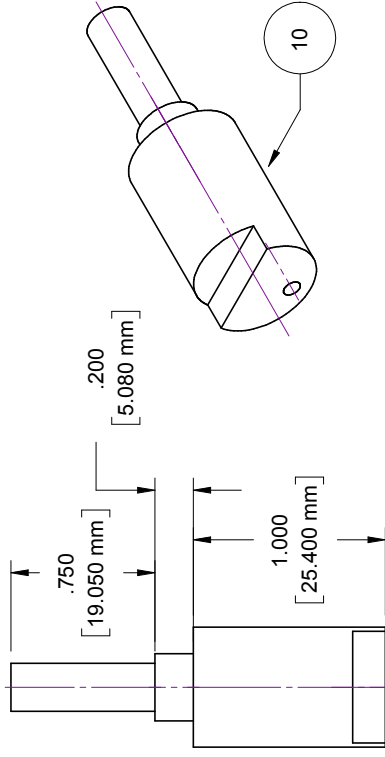
# James Engine HEX-2

ZONE

REV

15 Jul 06

Mill .250" wide and .090" deep.  
See text for setup.



SIZE

A

SCALE

1:1

Title

CRANKSHAFT AND CRANKSHAFT END

SHEET

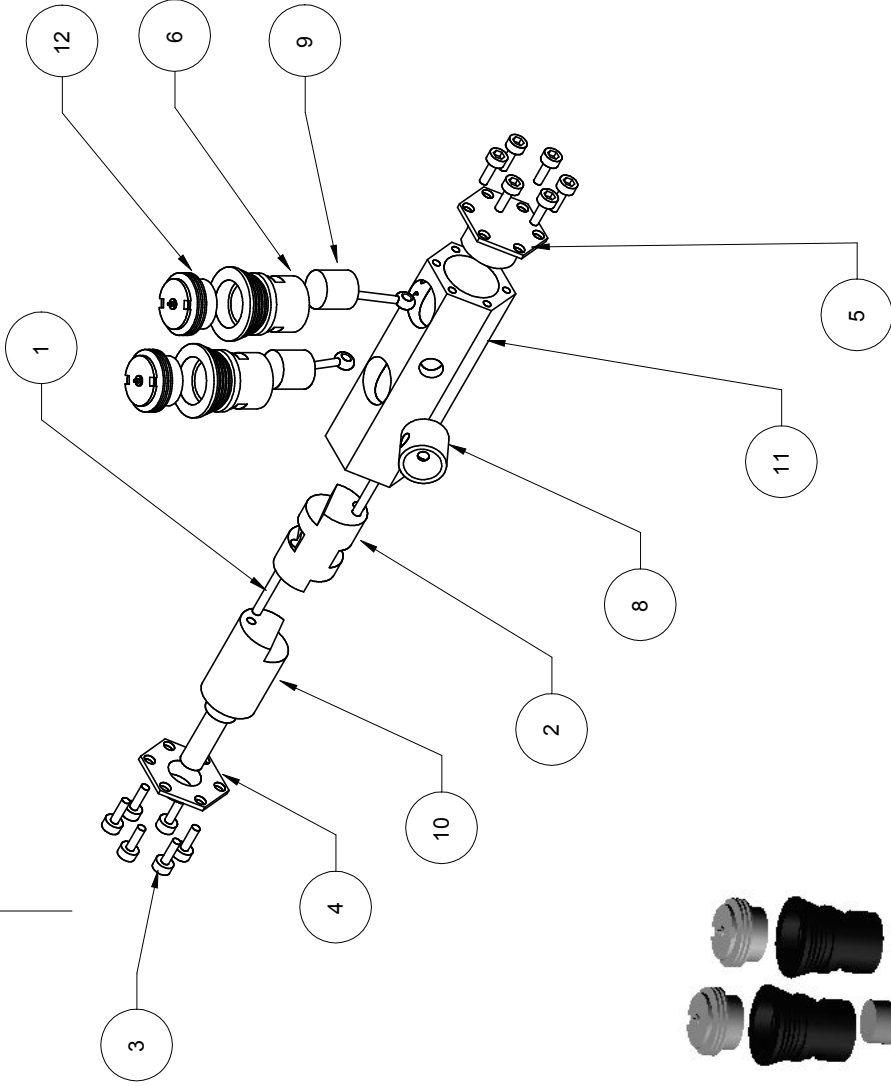
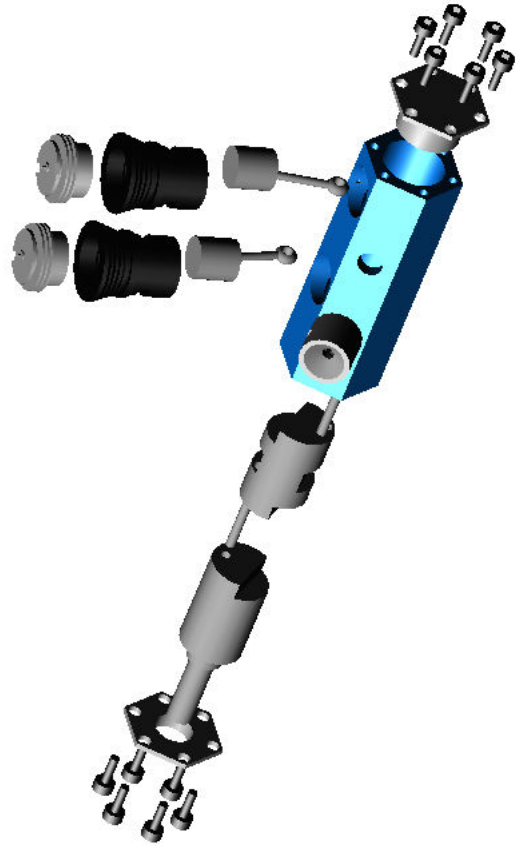
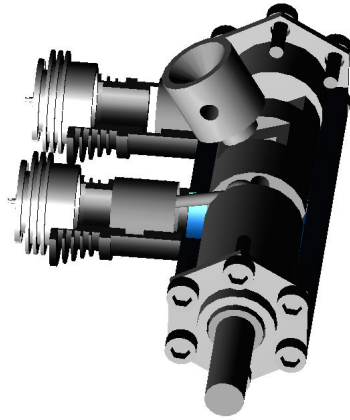
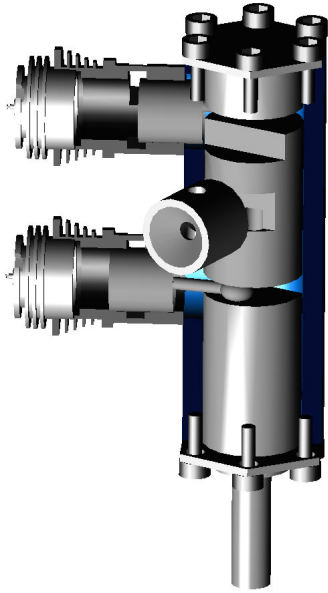
SHEET 5 of 6

REV

# James Engine HEX-2

15 Juli 06

ZONE REV



SIZE <b>A</b>	Title ASSEMBLY DRAWING	REV
SCALE 1:1	SHEET SHEET 6 of 6	